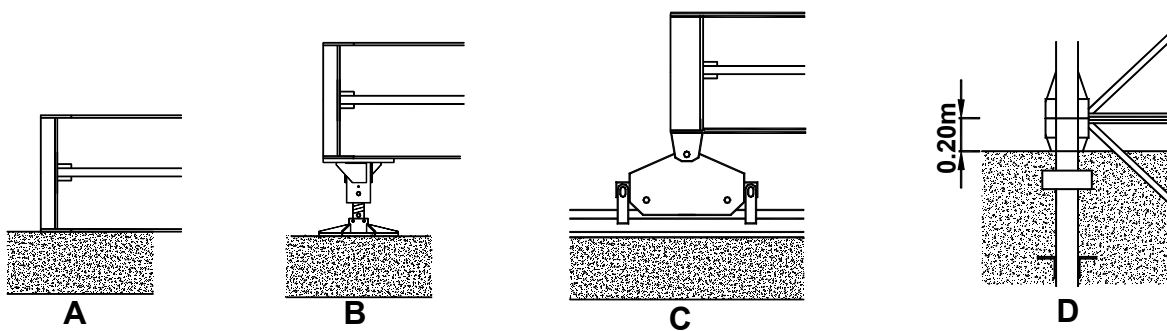
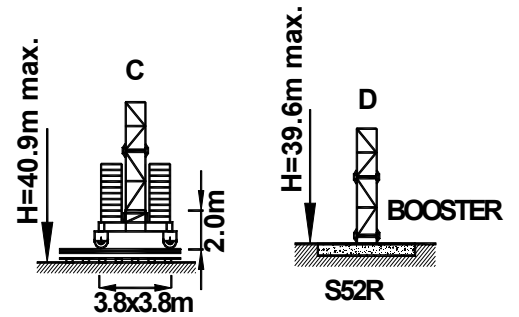
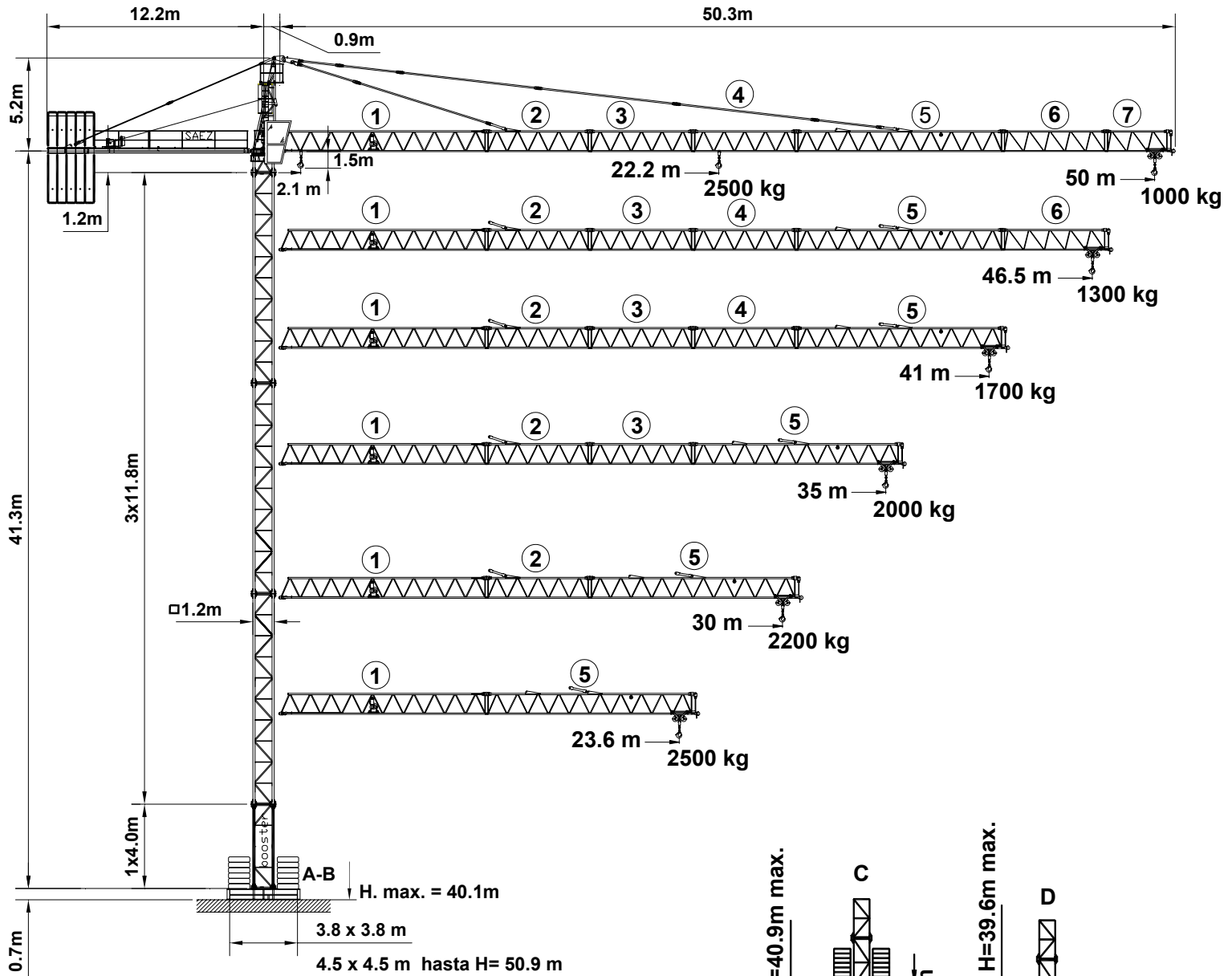


# S-50

# GRÚA TORRE TOWER CRANE GRU A TORRE


# SAEZ





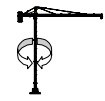
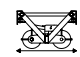
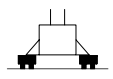


**DIN/FEM**

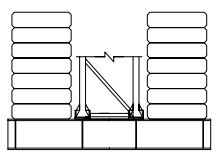
Según UNE 58-101-92 // FEM 1001-87

Cumple directiva 98/37/CE  
According to directive 98/37/CE  
Compie direttiva 98/37/CE

	Alcance Radius Sbraccio (m)	Campo C. Max Max swl range from to Campo di carico mass. 2500 Kg	50	48	46,5	44	41	39	37	35	33	30	28	26	24	23,6	20	18
			2500 kg 	50	2.1-22.2	1000	1050	1090	1165	1265	1340	1420	1515	1620	1800	1945	2110	2300
46,5	2.1-25.5				1300	1370	1485	1570	1665	1770	1890	2100	2265	2455	2500	2500	2500	2500
41	2.1-28.9						1700	1795	1905	2025	2160	2400	2500	2500	2500	2500	2500	2500
35	2.1-28.5									2000	2135	2365	2500	2500	2500	2500	2500	2500
30	2.1-26.7											2200	2370	2500	2500	2500	2500	2500
23,6	2.1-23.6																2500	2500

	Alcance Radius Sbraccio (m)	Campo C. Max Max swl range from to Campo di carico mass. 4000 Kg	50	48	46,5	44	41	38	35	33	30	27	23,6	21	18	15	12	9
			2500 kg 	50	2.1-13.8	850	900	940	1015	1115	1230	1365	1470	1650	1870	2200	2505	2985
46,5	2.1-15.8				1150	1220	1335	1465	1620	1740	1950	2205	2585	2935	3485	4000	4000	4000
41	2.1-17.9						1550	1700	1875	2010	2245	2535	2965	3360	3980	4000	4000	4000
35	2.1-17.7							1850	1985	2215	2500	2930	3315	3930	4000	4000	4000	4000
4000 kg 	30	2.1-16.6									2050	2315	2715	3080	3650	4000	4000	4000
	23,6	2.1-15.5												2500	2855	3385	4000	4000

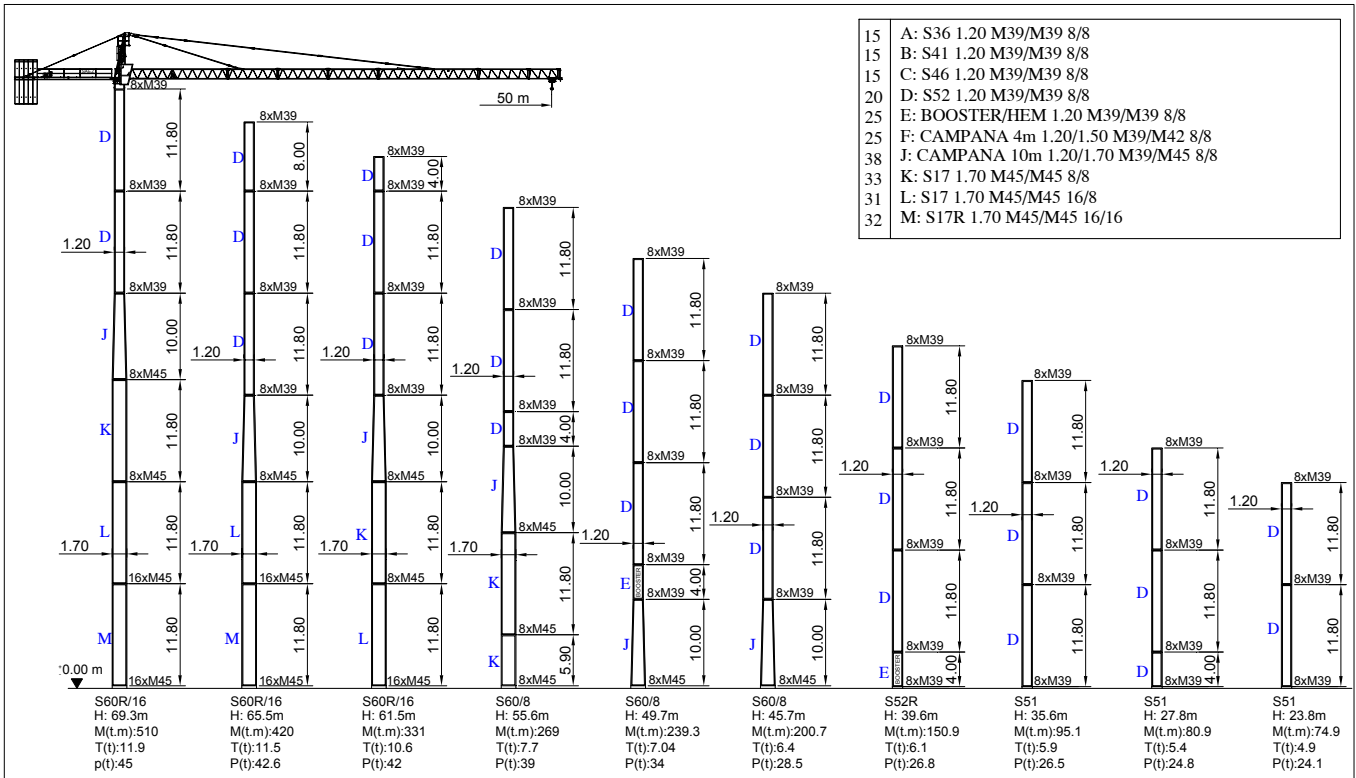
CARGA / VELOCIDAD (kg/m/min) LOAD / SPEED • CARICO / VELOCITA'				MECANISMOS MECANISM / MECANISMI		
Potencia Power / Potenza		19 Hp (14 Kw) - 2.5 t	* 25 Hp (18.5 Kw) - 4.0 t			
	1ª	2500 kg – 8 m/min	2500 kg – 8 m/min			
	2ª	2500 kg – 30 m/min	2500 kg – 31 m/min			
	3ª	1300 kg – 60 m/min	1500 kg – 62 m/min			
	1ª	4000 kg – 4 m/min	4000 kg – 4 m/min			
	2ª	4000 kg – 15 m/min	4000 kg – 16 m/min			
	3ª	2600 kg – 30 m/min	2600 kg – 32 m/min			
				0.3 - 0.6 – 0.9 rpm	30/60 m/min	20 m/min
				5.5 kw	1.5/3.0 kw	2 x 2.2 kw

ALCANCE RADIUS / SBRACCIO	50 m		46.5 m		41 m	35 m	30 m		23.6 m	
CONTRAPESO AÉREO COUNTERWEIGHT AIR CONTRAPPESO AEREO	A	B	A	C	A	A	A	C	A	B
	4	1	4	1	4	3	2	1	1	1
	10600 kg		10050 kg		9200 kg	6900 kg	5450 kg		3700 kg	
LASTRE DE LA BASE / BASE BALLAST BLOCKS / ZAVORRA ALLA BASE										
	CON BASE DE WITH BASE OF CON BASE DA		18.6 m	24.6 m	30.6 m	36.6 m	40.6 m	50.9 m		
	3.8x3.8m		45.6 t	45.6 t	53 t	53 t	60.8 t	-		
	4.5x4.5m		45.6 t	45.6 t	53 t	53 t	60.8 t	72.8 t		

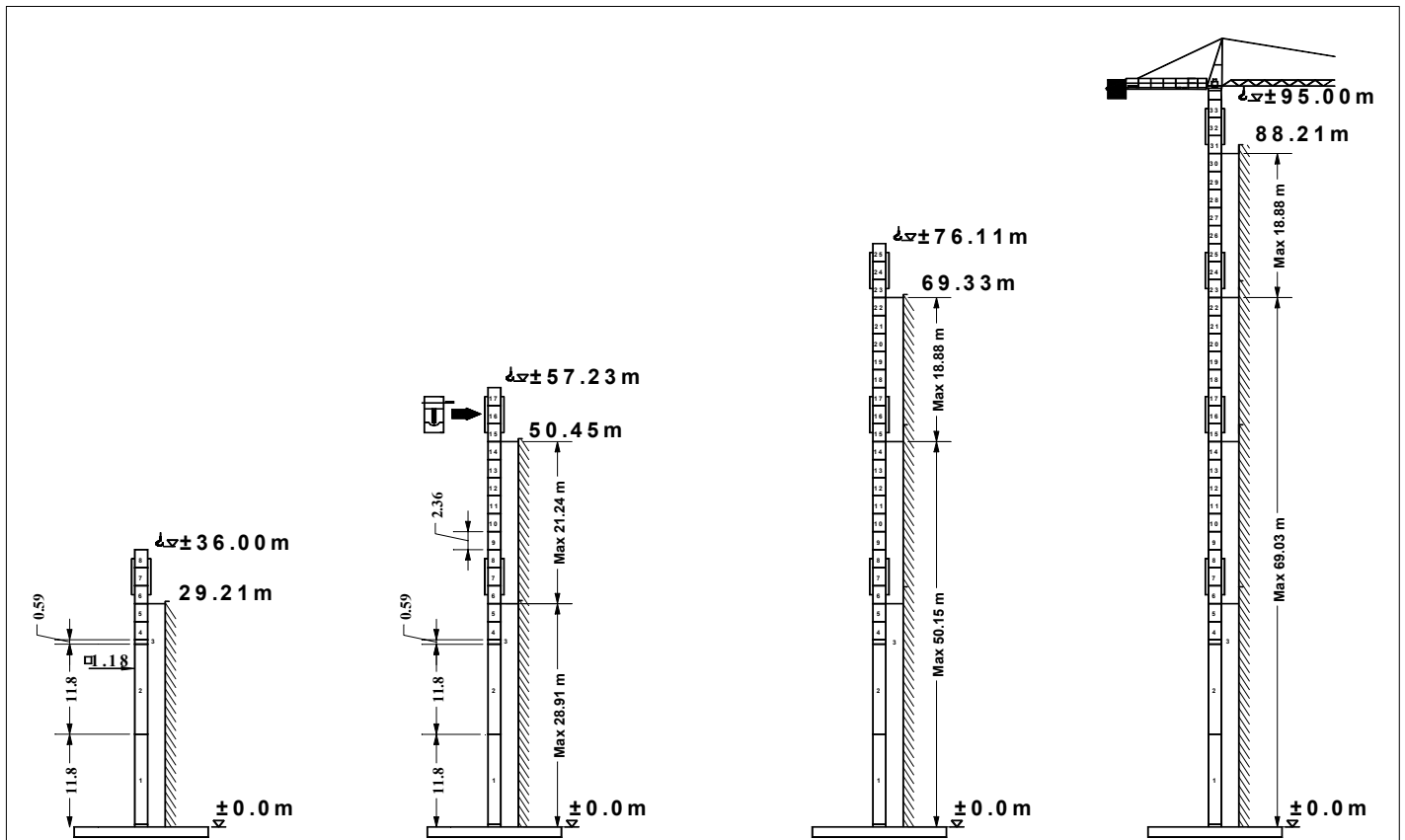
PESO DE CONSTRUCCIÓN APROXIMADO DEAD WEIGHT APPROX / PESO DI COSTRUZIONE APPOSSIMATO		22 380 kg	
POTENCIA REQUERIDA Y CONDUCTORES REQUIERED POWER AND CONDUCTORS POTENZA ELETTRICA NECESSARIA E CONDUTTORI	CON ELEVACIÓN 18.5 Kw / CON SOLLEVAMENTO 18.5 Kw		
	31 KVA - 400 V – 50 Hz		
	25 m	50 m	100 m
4x25mm <sup>2</sup>		4x25mm <sup>2</sup>	4x25mm <sup>2</sup>

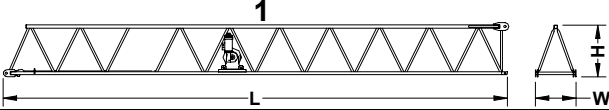
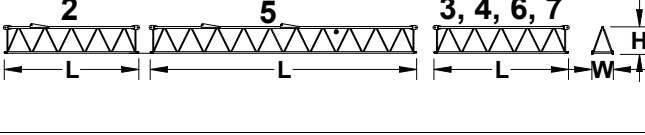
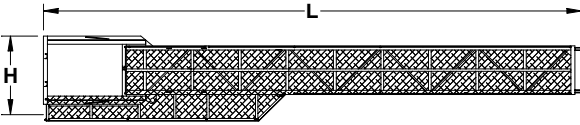
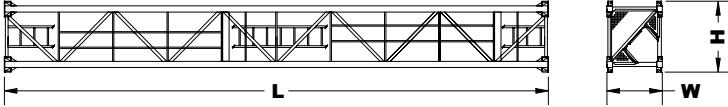
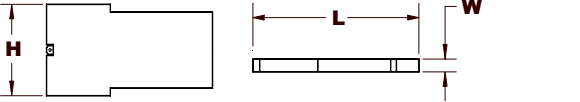
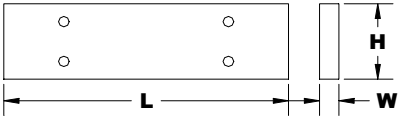
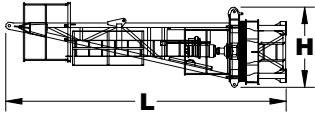
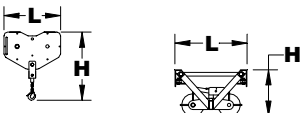
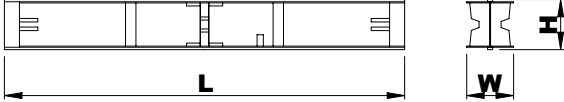
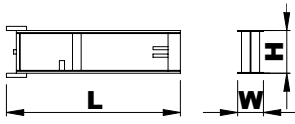
\* OPCIONAL

### COMPOSICIÓN DE TORRE / TOWER COMPOSITION / STRUTTURA DELLA TORRE



### MONTAJE HIDRÁULICO / HYDRAULIC ASSEMBLY / MONTAGGIO IDRAULICO



PESO Y DIMENSIONES DE LOS ELEMENTOS DE LA GRÚA WEIGH AND DIMENSIONS OF THE CRANE / PESO E DIMENSIONI DEI ELEMENTI DELLA GRU		L (m)	W (m)	H (m)	Peso (kg)	
<b>ELEMENTO DE PLUMA Nº1</b> JIB ELEMENT Nº 1 ELEMENTO DI BRACCIO		11.85	1.04	1.32	1125	
<b>ELEMENTO INTERMEDIO DE PLUMA</b> INTERMEDIATE JIB ELEMENT ELEMENTO INTERMEZZO DI BRACCIO		2 3 4 5 6 7	5.94 5.94 5.94 11.74 5.14 3.64	0.95 0.95 0.95 0.95 0.95 0.95	1.32 1.22 1.22 1.32 1.22 1.22	465 475 450 915 330 215
<b>CONTRAPLUMA</b> COUNTER JIB CONTROBRACCIO		11.5	0.26	1.90	2450	
<b>ELEMENTO DE TORRE</b> TOWER ELEMENT ELEMENTO DI TORRE		11.8 4.0	1.2 1.2	1.38 1.38	3000 1100	
<b>BLOQUE DE CONTRAPESO</b> COUNTERWEIGHT BLOCKS BLOCCO DI CONTRAPPESO		A B C	2.94 2.94 1.70	0.30 0.18 0.18	1.25 1.25 1.25	2300 1400 850
<b>BLOQUE DE LASTRE DE LA BASE</b> BASE BALLAST BLOCK BLOCCO DI ZAVORRA ALLA BASE		4.4	1.2	0.3	3800	
<b>CABEZA DE TORRE</b> TOWER HEAD TESTA DI TORRE		6.50	1.8	1.7	3200	
<b>GANCHO Y CARRO</b> HOOK AND TROLLEY GANCIO E CARRELLO		0.75 0.96	0.12 1.10	1.40 0.62	90 110	
<b>VIGA PRINCIPAL DE LA BASE</b> MAIN BEAM OF THE BASE TRAVE PRINCIPALE DELLA BASE		5.72	0.67	0.65	1560	
<b>SEMIVIGA SECUNDARIA DE LA BASE</b> HALF BEAM SECONDARY OF THE BASE SEMITRAVE SECONDARIA DELLA BASE		2.77	0.45	0.665	1500	

MAYO 2004

**Gruas SÁEZ se reserva el derecho a modificaciones sin previo aviso.**

*Subject to modifications by Gruas SÁEZ, without previous warning. // Il fabbricante si riserva il diritto di fare qualunque modifica senza preavviso.*

SISTEMAS FORZA S.L. Ctra. de Beniján, Km. 5, Beniján - MURCIA (España)

Tfno.: +34 968 82 08 62 / 66 • Fax.: +34 968 82 48 57

E-mail: [forza@forzasl.com](mailto:forza@forzasl.com)

[www.forzasl.com](http://www.forzasl.com)